

COMMERCIAL THIMBLE

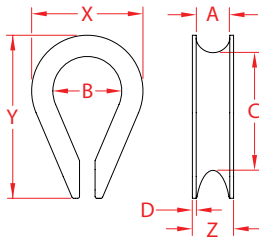
304 STAINLESS STEEL



Import



Stamped



ITEM	A (size)	B	C	D	X (height)	Y (length)	Z (width)	WT (lb)	PACKAGING TYPE	EACH (qty)	INNER (qty)	CARTON (qty)	UPC
S0123-0001	1/16"	0.28"	0.48"	0.03"	0.48"	0.72"	0.18"	0.3/100	POLYBAG	1	1,000	5,000	791506031574
S0123-0002	1/16"-5/64"	0.31"	0.62"	0.03"	0.50"	0.87"	0.19"	0.4/100	POLYBAG	1	100	10,000	791506031581
S0123-0003	3/32"-1/8"	0.38"	0.72"	0.03"	0.60"	0.98"	0.21"	0.5/100	POLYBAG	1	100	5,000	791506031598
S0123-0004	5/32"	0.43"	0.73"	0.04"	0.68"	1.08"	0.27"	0.7/100	POLYBAG	1	100	5,000	791506031604
S0123-0005	3/16"	0.55"	0.78"	0.04"	0.87"	1.23"	0.30"	0.01	POLYBAG	1	100	3,000	791506031611
S0123-0007	1/4"	0.69"	0.95"	0.05"	1.00"	1.44"	0.41"	0.02	POLYBAG	1	50	1,500	791506031628
S0123-0008	5/16"	0.78"	1.40"	0.06"	1.25"	1.93"	0.49"	0.04	POLYBAG	1	50	800	791506031635
S0123-0010	3/8"	0.94"	1.70"	0.06"	1.51"	2.28"	0.56"	0.06	POLYBAG	1	20	500	791506031642
S0123-0013	1/2"	1.20"	1.85"	0.06"	1.75"	2.62"	0.68"	0.08	POLYBAG	1	10	300	791506031659
S0123-0014	9/16"	1.36"	2.05"	0.06"	1.98"	2.81"	0.76"	0.10	POLYBAG	1	10	250	791506031666
S0123-0016	5/8"	1.45"	2.37"	0.07"	2.16"	3.32"	0.87"	0.17	POLYBAG	1	10	250	791506010012
S0123-0018	3/4"	1.60"	2.63"	0.08"	2.35"	3.65"	0.98"	0.21	POLYBAG	1	10	100	791506031673
S0123-0022	7/8"	1.90"	3.10"	0.09"	2.93"	4.43"	1.18"	0.39	POLYBAG	1	10	70	791506031680
S0123-0025	1"	2.08"	3.36"	0.09"	3.11"	4.80"	1.29"	0.49	POLYBAG	1	5	50	791506031697

NOTE:
ALL DIMENSIONS ARE NOMINAL (+/- 3%) AND ARE SUBJECT TO CHANGE WITHOUT NOTICE.